



SUBMERGED, MULTIPLE SUCTION OUTLETS, SINGLE AND UNBLOCKABLE OUTLET INSTRUCTIONS

IMPORTANT SAFETY INSTRUCTIONS FOR

8CCxxx, 8AVxxx, LP8xxx, RLP8AVxxx, 10AVxxx, RFS9xxx, LPRFS9xxx, RFS12xxx, 6HPxxx (2"), 6HPxxx (1 1/2"), 32CDFLxxx, 32CDFLFRxxx, 32CAVxxx and 32CAVFRxxx, 32CDFLACxxx, 32CAVACxxx, 32CDFLVxxx, 32CAVVxxx, 32CDBTxxx, 32CDBTFRxxx, WAV12xxx, RWAV12xxx, WAV9xxx, RWAV9xxx, WAV18xxx, 8CCxxx, WAV24xxx, 24xxx, SUN9xxx, SUN12xxx, 1216xxx, R1216xxx, 4RNDxxx, LP8MHxxx, 8CCMHxxx, 8PCxxx, 914xxx, R914xxx, 32CDLTxxx, 32CDLTFRxxx

(xxx = COLOR SUFFIX)

MEETS OR EXCEEDS ASME/ANSI A112.19.8a-2008
ANTI-ENTRAPMENT/ANTI-VORTEX



READ AND FOLLOW ALL INSTRUCTIONS

▲ WARNING!

IMPROPER INSTALLATION OR USE OF THIS PRODUCT MAY PRESENT A RISK OF HAIR OR BODY ENTRAPMENT AND DROWNING. Install this equipment in accordance with the instructions provided. Use only with the components and mounting hardware provided. FAILURE TO FOLLOW THESE INSTRUCTIONS AND/OR USE WITH COMPONENTS NOT PROVIDED BY AQUASTAR POOL PRODUCTS AND INTENDED TO BE USED WITH THIS PRODUCT MAY RESULT IN IMPROPER POSITIONING OR FUNCTIONING OF SUCTION OUTLET AND MAY CAUSE SEVERE PERSONAL INJURY OR DEATH.

SAVE THESE INSTRUCTIONS FOR FUTURE REFERENCE

- If not a single, unblockable outlet, in the event of one suction outlet being completely blocked, the remaining suction outlets serving the system shall have a flow rating capable of the full flow of the pump(s) or the specific suction system. If in doubt about the rating and/or head loss curve of your system, consult a qualified pool or spa professional and/or your respective equipment manufacturer(s). Also, double check with your local building/health authorities regarding single vs. multiple drain installations, etc.
- All sizes of connecting pipe are acceptable, pending velocity and GPM calculations. The larger, the better!
- Replace cover and screws within 5 years.

MAXIMUM RECOMMENDED SYSTEM FLOW RATE BY PIPE SIZE

Pipe Size	1½"	2"	2½"	3"
Flow Rate in GPM	45	80	110	160

ALL MODELS LISTED BELOW = ANTI-ENTRAPMENT/ANTI-VORTEX AND FOR SINGLE OR MULTIPLE USE

MAX FLOW RATES (PER OUTLET) MOUNTING POSITIONS (xxx=COLOR SUFFIX)

Model	WAV12xxx (and RWAV12xxx)	WAV9xxx (and RWAV9xxx)	WAV18xxx	8CCxxx (and 8CCMHxxx)	8AVxxx (and RFS9xxx, 8SBxxx)	LP8AVxxx (and RLP8AVxxx, LPRFS9xxx, LP8SBxxx, LP8MHxxx)	10AVxxx (and RFS12xxx, 10AVDDBSxxx, 10AVRCFRxxx)	SUN9xxx	SUN12xxx
Floor	361 GPM @ 1.3 fps	224 GPM @ 1.6 fps	628 GPM @ 1.1 fps	104 GPM @ 3.3 fps	88 GPM @ 3.2 fps	100 GPM @ 4.2 fps	206 GPM @ 5.8 fps	212 GPM @ 3.5 fps	280 GPM @ 2.5 fps
Wall	361 GPM @ 1.3 fps	224 GPM @ 1.6 fps	628 GPM @ 1.1 fps	76 GPM @ 2.4 fps	70 GPM @ 2.6 fps	70 GPM @ 2.9 fps	96 GPM @ 2.8 fps	128 GPM @ 2.1 fps	280 GPM @ 2.5 fps

MAX FLOW RATES (PER OUTLET) MOUNTING POSITIONS (xxx=COLOR SUFFIX)

Model	32CDFLxxx (and 32CDFLFRxxx, 32CDFLVxxx, 32CDFLACxxx)	32CAVxxx (and 32CAVFRxxx, 32CAVVxxx, 32CAVACxxx)	32CDBTxxx (and 32CDBTFRxxx)	WAV24xxx	24xxx	1216xxx (and R1216xxx)	4RNDxxx	914xxx (and R914xxx)	8PCxxx
Floor	316 GPM @ 3.9 fps	236 GPM @ 3.4 fps	120 GPM @ 1.19 fps	1444 GPM @ 1.3 fps	1531 GPM @ 1.4 fps	460 GPM @ 1.46 fps	72 GPM @ 5.3 fps	560 GPM @ 2.1 fps	64 GPM @ 2.4 fps
Wall	208 GPM @ 2.6 fps	136 GPM @ 1.9 fps	NA	1444 GPM @ 1.3 fps	1531 GPM @ 1.4 fps	445 GPM @ 1.4 fps	72 GPM @ 5.3 fps	300 GPM @ 1.2 fps	56 GPM @ 2.0 fps

INSTALLATION LAYOUTS

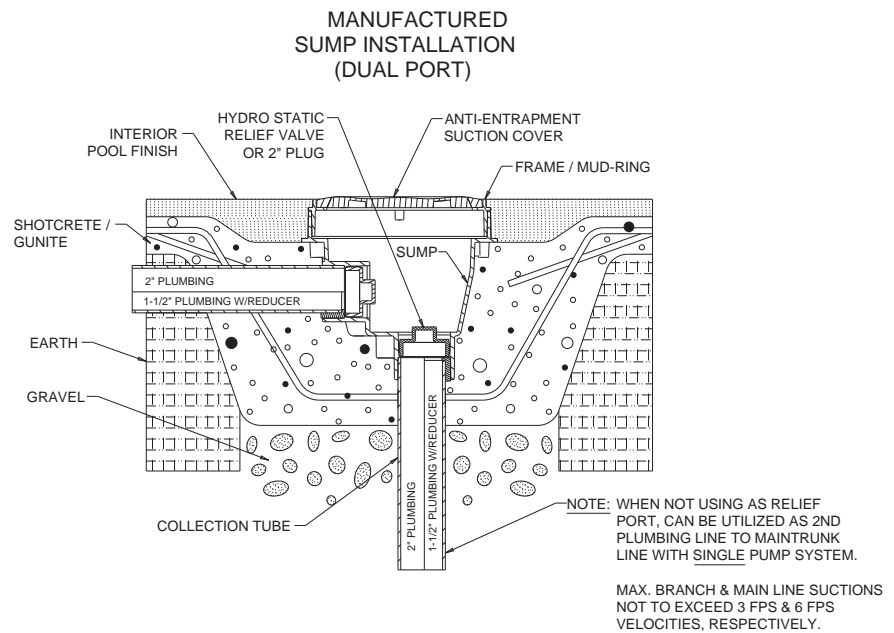
- A. Requires Phillips screw driver. Hand tighten only. Do not use electrical or air drills.
- B. See Fig. 1 for installation layout with manufactured sump
- C. See Fig. 2 for installation layout without manufactured sump (Field-fabricated sump)
- D. Measure from underside of high point of the cover to the top of pipe(s) to determine proper sump depth.

MANUFACTURED SUMP INSTALLATION (DUAL PORT)

IMPORTANT

- Single or Multiple drain use.
- Models: 8SBxxx, LP8SBxxx or 10AVDDSB (SB = sump bucket) with 8CCxxx, 8AVxxx, LP8AVxxx, RLP8AVxxx, RFS9xxx, LPRFS9xxx, RFS12xxx, 10AVxxx, WAV12xxx, RWAV12xxx, WAV9xxx, RWAV9xxx, WAV18xxx, WAV24xxx, 24xxx, 1216xxx, R1216xxx, LP8MHxxx, 8CCMHxxx, 4RNDxxx, SUN9xxx, SUN12xxx, 8PCxxx (AV=Anti-Vortex)
- NOTE: 8SB or LP8SB available in 3 styles: (6" Deep)
 - Regular collar (frame)
 - Adjustable collar (frame) (AC),
 - Vinyl/fiberglass (V)
- NOTE: 12" square and 10" round SB available in 1 style: (12" Deep)
 - Regular Collar (frame) with two (2) 2 1/2"x2" S/S on bottom only (No Side Port)

fig. 1

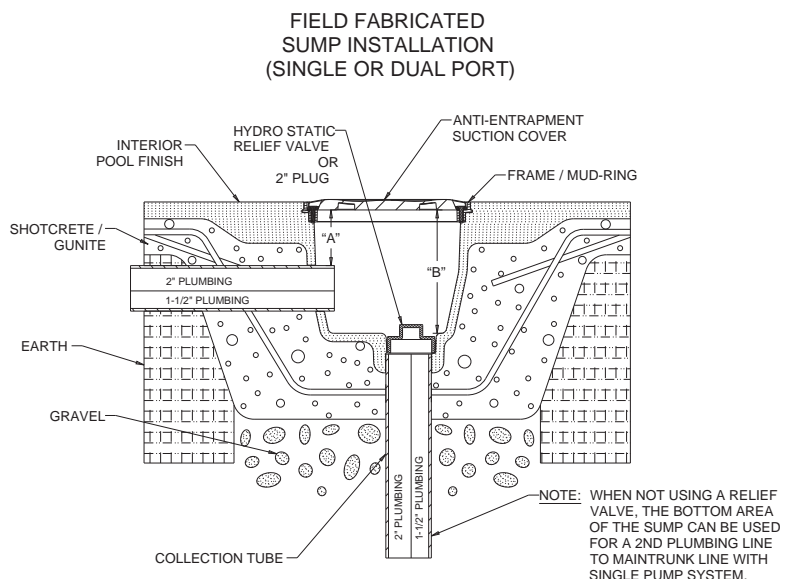


FIELD FABRICATED SUMP INSTALLATION (SINGLE OR DUAL PORT)

IMPORTANT

- At IAPMO (a nationally recognized testing lab), all Aquastar suction outlet covers have been tested with 3" deep sumps (unless otherwise indicated).
- "A" and/or "B" should be a min. 3" to bottom of cover. (except 4RNDxxx - Sumpless, WAV18xxx - 6", WAV24xxx and 24xxx - 12")
- Second Line can be on bottom area.
- Single or Multiple drain use.
- Models: 8CCxxx, 8AVxxx, LP8AVxxx, RLP8AVxxx, RFS9xxx, LPRFS9xxx, RFS12xxx, 10AVxxx, 10AVRCFRxxx, WAV12xxx, RWAV12xxx, WAV9xxx, RWAV9xxx, WAV18xxx, WAV24xxx, 24xxx, 1216xxx, R1216xxx, LP8MHxxx, 8CCMHxxx, 4RNDxxx (AV=Anti-Vortex)

fig. 2



For additional information on proper drain installation refer to The Association of Pool & Spa Professionals ANSI/APSP-7 Standard and the US Consumer Product Safety Commission Guidelines for Entrapment Hazard.

SPECIAL NOTE ON CHANNEL DRAINS TO BUILDER, INSTALLER, PLAN CHECKER AND/OR INSPECTOR!

INSTALLATION LAYOUTS

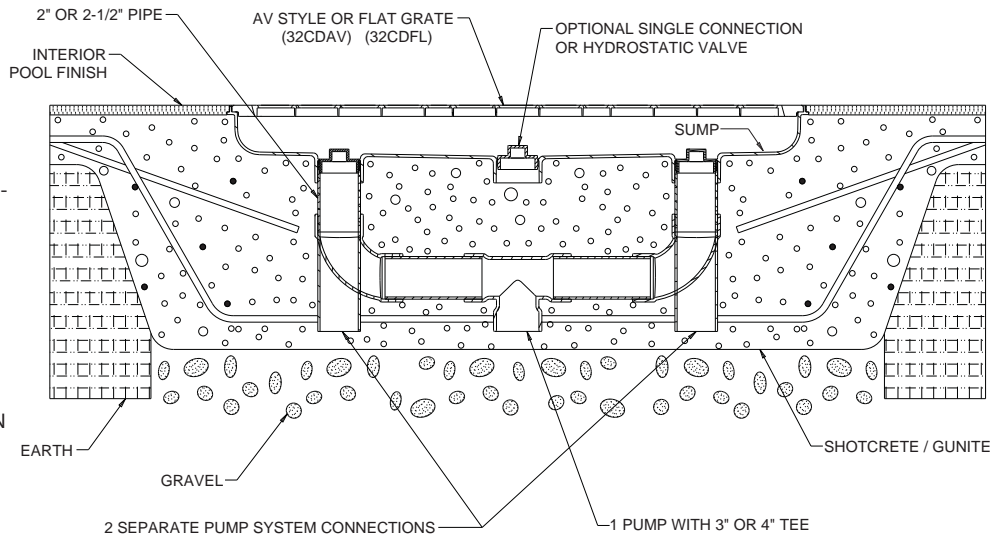
- A. See Fig. 3 for installation layout with manufactured sump
- B. See Fig. 4 for installation layout without sump (Field-fabricated sump)
- C. Requires Phillips screw driver. Hand tighten only. Do not use electrical or air drills.

MANUFACTURED SUMP INSTALLATION (ONE, TWO, OR THREE PORTS)

IMPORTANT

- Single or multiple drain or pipe use.
- Models: 32CDFLxxx, 32 CDAVxxx, 32CDFLVxxx, 32CDAVxxx, 32CDAVACxxx, or 32CDFLACxxx, 32CDLTxxx (AV=Anti-Vortex)
- All Channel Drains are VGB 2008 Compliant and have been tested to 3" in sump depth-field-fabricated or manufactured.
- Plumbing to 1 or 2 pumps plus skimmer equalizer are approved- DO NOT exceed maximum flow rate of outlet cover for total system.
- 1, 2, or 3 pipe connections are approved at any port or configuration under manufactured sump or field-fabricated sump respectively.
- ANY PLUMBING CONFIGURATION IS APPROVED BUT DO NOT EXCEED MAXIMUM FLOW RATE!

fig. 3
MANUFACTURED SUMP INSTALLATION (ONE, TWO, OR THREE PORTS)

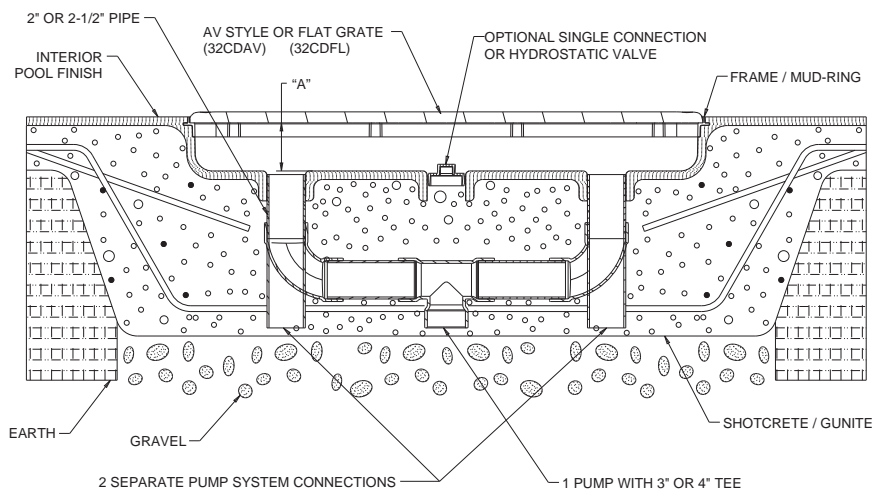


FIELD FABRICATED SUMP INSTALLATION (ONE, TWO, OR THREE PORTS)

IMPORTANT

- At IAPMO (a nationally recognized testing lab), all Aquastar suction outlet covers have been tested with 3" deep sumps (unless otherwise indicated).
- "A" should be a min. 3" to bottom of cover.
- Single or multiple drain use.
- Models: 32CDFLFRxxx, 32CDFLACFRxxx, or 32CDAVFRxxx. 32CDAVACFRxxx, 32CDBTFRxxx, 32CDAVACFRxxx, 32CDLTFRxxx (AV=Anti-Vortex)

fig. 4
FIELD FABRICATED SUMP INSTALLATION (ONE, TWO, OR THREE PORTS)



For additional information on proper drain installation refer to The Association of Pool & Spa Professionals ANSI/APSP-7 Standard and the US Consumer Product Safety Commission Guidelines for Entrapment Hazard.

▲ WARNING! SUCTION ENTRAPMENT HAZARD

INCREASING PUMP SIZE WILL INCREASE FLOW. When in doubt, consult your pool and spa professional. NEVER use a pool or spa that has a missing or broken suction outlet cover. USING A POOL OR SPA WITH A MISSING OR BROKEN SUCTION OUTLET COVER CAN RESULT IN HAIR OR BODY ENTRAPMENT WHICH CAN CAUSE SEVERE BODILY INJURY OR DEATH. THE VACUUM IN SUCTION OUTLETS AND/OR SUCTION OUTLET COVERS WHICH ARE DAMAGED, BROKEN, CRACKED, MISSING OR UNSECURED CAN CAUSE SEVERE INJURY AND/OR DEATH DUE TO THE FOLLOWING ENTRAPMENT HAZARDS: HAIR ENTRAPMENT – Hair can become entangled in suction outlet cover. LIMB ENTRAPMENT – A limb inserted into an opening of a suction outlet sump or suction outlet cover that is damaged, broken, cracked, missing or not securely attached can result in a mechanical bind or swelling of the limb. BODY SUCTION ENTRAPMENT – A negative pressure applied to a large portion of the body or limbs can result in an entrapment. EVISCERATION/DISEMBOWELMENT ENTRAPMENT – A negative pressure applied directly to the intestines through an unprotected suction outlet sump or suction outlet cover which is damaged, broken, cracked, missing, or unsecured can result in evisceration/disebowelment entrapment. MECHANICAL ENTRAPMENT – There is a potential for jewelry, swimsuit, hair decorations, finger, toe or knuckle to be caught in an opening of a suction outlet cover resulting in mechanical entrapment.

▲ WARNING! TO REDUCE THE RISK OF ENTRAPMENT HAZARD

If not an approved single, unblockable outlet, a minimum of two functioning suction outlets per pump must be installed. Suction outlets in the same plane (i.e. floor or wall) must be installed a minimum of three feet (3') (1 meter) apart, as measured from near point to near point. Dual suction fittings shall not be located on seating areas or on the backrest for such seating areas. If any suction outlets are located closer they shall be located on two different planes (i.e. one on the bottom and one on the vertical wall, or one each on two separate vertical walls). The maximum system flow rate shall not exceed the flow rating of any listed (per ASME/ANSI A112.19.8-2007) suction outlet cover installed. Never use pool or spa if any suction outlet component is damaged, broken, cracked, missing or not securely attached. Replace damaged, broken, cracked, missing or not securely attached suction outlet components immediately. In addition to two or more suction outlets per pump installed in accordance with latest APSP, IAF Standards and CPSC guidelines, follow all national, state and local codes applicable. Use only transitional (typically green) glues when attaching PVC pipe to ABS fittings. Use gray medium set glue when attaching PVC pipe to our PVC based skimmers and double deep sump buckets. In both cases, do not ever use blue glue or related hot glues, clear glues or any fast setting cement.

WARNING! – Failure to remove pressure test plugs and/or plugs used in winterization of the pool/spa from the suction outlets can result in an increased potential for suction entrapment as described above.

WARNING! – Failure to keep suction outlet components clear of debris, such as leaves, dirt, hair, paper and other material can result in an increased potential for suction entrapment as described above.

WARNING! – Suction outlet components have a finite life, the cover/grate should be inspected before each use of facility and replaced at least every five (5) years or if found to be damaged, broken, cracked, missing, not securely attached or missing screws. DO NOT use facility until corrected!

As the manufacturer, AquaStar Pool Products, Inc., hereby certifies that their suction outlet and drain covers meet or exceed the requirements of the Virginia Graeme Baker Pool & Spa Safety Act, VGB 2008 and ASME/ANSI A112.19.8a-2008 standards and safety regulations as set forth by the Consumer Products Safety Commission.

A copy of this certificate is available on AquaStar Pool Products Inc's website under news & information: www.aquastarpoolproducts.com

A Safe Drain is No Accident™

